

# Mounting



Apply gel- Spread evenly shoulder to shoulder, around tread. Do not apply to tire beads.



Lube tire beads with tire lube- Use lube sparingly to avoid contaminating gel.



Insert support ring into tire- Be sure arrow on support ring is pointed in the correct direction.



Lube wheel with tire lube- Lube full face, flange to flange. Relube tire bead if necessary. Assure TPMS is in place.



Place tire and support ring on wheel, and lock support ring into place- Push on support ring using roller until support ring is locked.



Pull inside tire bead outside of wheel.



Seat outside tire bead.



Seat inside tire bead.



Inflate- Inflate to 15 psi. Inspect for pooch, and re-roll if necessary. Inflate to vehicle placard pressure.

# Demounting



Deflate- Inspect tire before deflation. Locate and mark any repair sites.



Roll and lubricate outside bead- Apply enough rolling pressure to make a gap for the lube to penetrate.



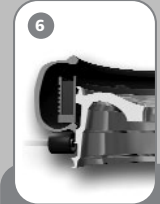
Insert plastic wheel protector between outside tire bead and wheel- Notch in wheel protector faces tire.



Unseat outside bead- Insert lever into notch of wheel protector, and remove the outer bead.



Roll and lubricate inside bead, then push inside bead into drop well of wheel- Apply enough pressure to make a gap for the lube to penetrate. Make at least two rotations so that lube can spread before pushing tire into drop well.



Push tire and support ring off of wheel.



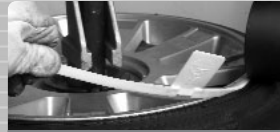
Remove support ring from tire.

# Repair steps



1

Inspect tire before deflation- Locate and mark any repair sites.



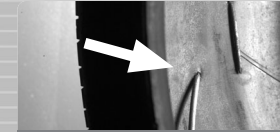
2

Dismount following demounting process.



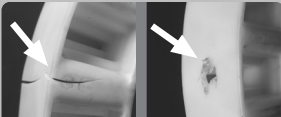
3

Clean gel from tire, wheel, support ring, and TPMS- Use a rag with water or soapy water, then dry with a clean towel.



4

Inspect tire interior- Follow RMA guidelines and PAX® System Inspection / Repair / Reuse Technical Bulletin.



5

Inspect support ring- Follow PAX® System Inspection / Repair / Reuse Technical Bulletin.



6

Inspect wheel- Follow PAX® System Inspection / Repair / Reuse Technical Bulletin.



7

Inspect TPMS- Follow PAX® System Inspection / Repair / Reuse Technical Bulletin.



8

Repair tire- Follow RMA guidelines.

1. Locate injury
2. Remove foreign object
3. Clean the area with a cleaner / buffer solution
4. Ream the injury
5. Buff the innerliner
6. Remove buffing dust
7. Apply even coat of cement and let dry
8. Apply cement to hole using probe or awl
9. Install patch plug
10. Stitch repair
11. Apply repair sealer
12. Cut plug flush with tread after inflation



9

Clean tire interior- Remove any dust or excess residue.



10

Remount- Follow PAX® System mounting procedures.



Mounting  
Demounting  
Repair



PAX MDR-01